

The Environmental, Social & Governance Division (SEG) is responsible for implementing environmental, social and corporate governance (ESG) policies and procedures, as well as reviewing and appraising proposed IDB Invest investments for compliance with the IDB Invest's environmental, social and governance requirements.

We work with clients to define steps necessary to address compliance gaps and to identify opportunities that go beyond compliance and risk mitigation, and contribute to long-term developmental impact and sustainability.

# PHOTOGRAPHIC MISSION REPORT

Tacuarembó-Salto Transmission Line  
February 27th - March 1st, 2023

IDB | Invest





# Mission Members

---

- Luiz Gabriel Todt de Azevedo (SEG Division Chief)
- João Paulo Diniz Abud (SEG Officer)
- Clayton Gladino (archeologist – IDB Invest consultant)
- Monica Bolaños (archeologist – IDB Invest consultant)
- Carmen Garcia Marín (independent E&S consultant)
- Bernardo Veliz Tello (independent E&S consultant)
- Xose Maria Nuñez Marcos (independent E&S consultant)



Road to Morató Village (where the main camp site is located)





Stone wall near side of the road on the way to camp site.



Main EPM camp site.

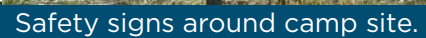
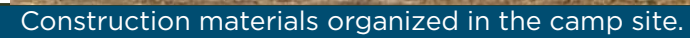
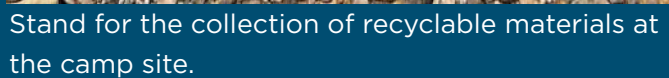


Working meeting at the EPM camp site.



Cafeteria at EPM camp site.









Storage and shaded workspace at camp site.

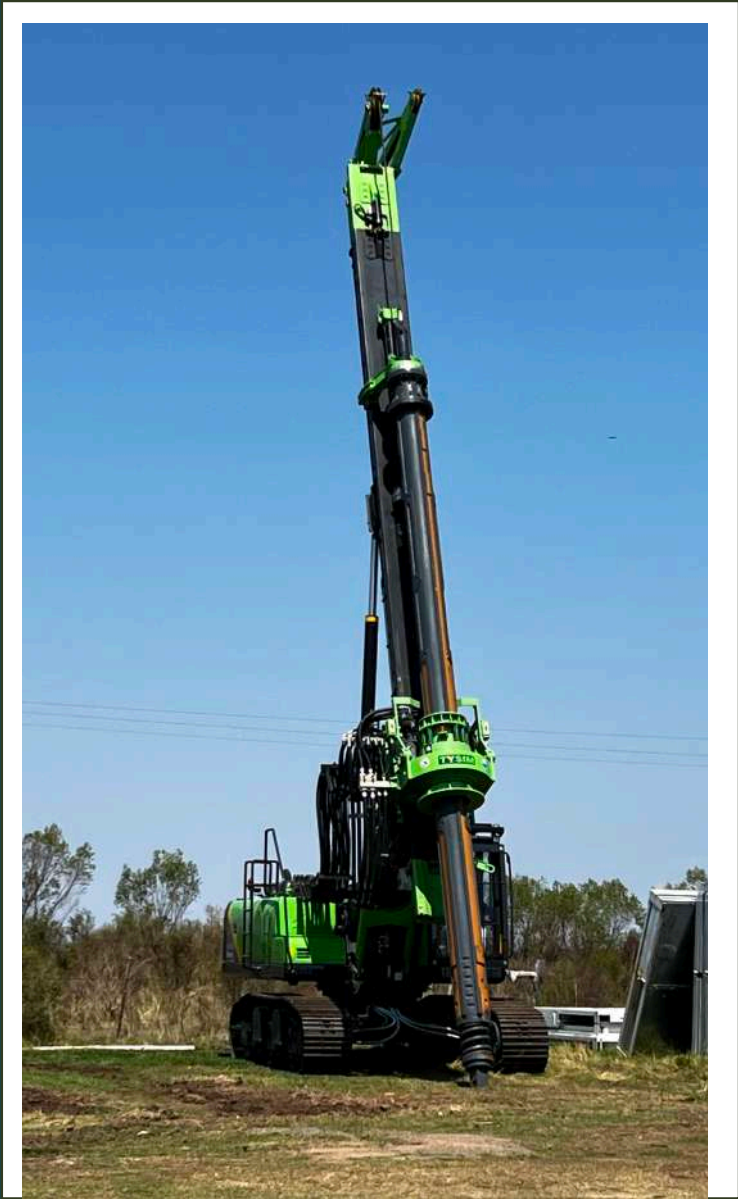


New construction equipment at the camp site.



Storage shade at camp site





New construction equipment at the camp site.



Accommodations at the camp site.



Health post at camp site.





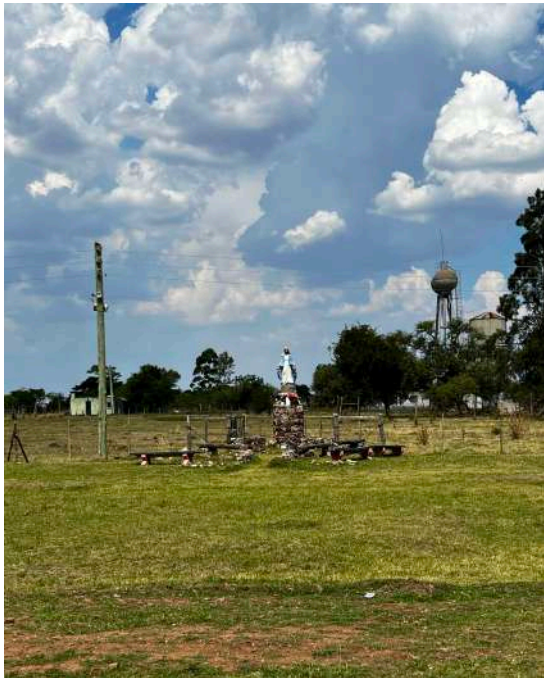
Ambulance available at camp site.



Church at the Morató village.



Morató Village.



Morató Village.







Stone wall/fence at private land (farm) by the road to the Morató village. Note partial collapse.



View of Castillo Morató at Estancia Buen Retiro from the main road.



Stone wall/fence naturally collapsing at private land by the road to the Morató village.





Tower foundation for the transmission line.



Tower foundation at Estancia Buen Retiro.



Gauchos herding cattle near the stone wall by Castillo Morató, Estancia Buen Retiro - view from the main road.



Workers near tower foundation at Estancia Buen Retiro.





View of the stone wall from the approximate midpoint location between one of the closest towers (T465) and the stone wall at Estancia Buen Retiro

View towards the location where the foundation of tower T465 (where the vehicles are) is – view from a location at about 2/3 of the distance from the stone wall towards the tower location at the Estancia Buen Retiro – stone wall on the background not shown in the photo.





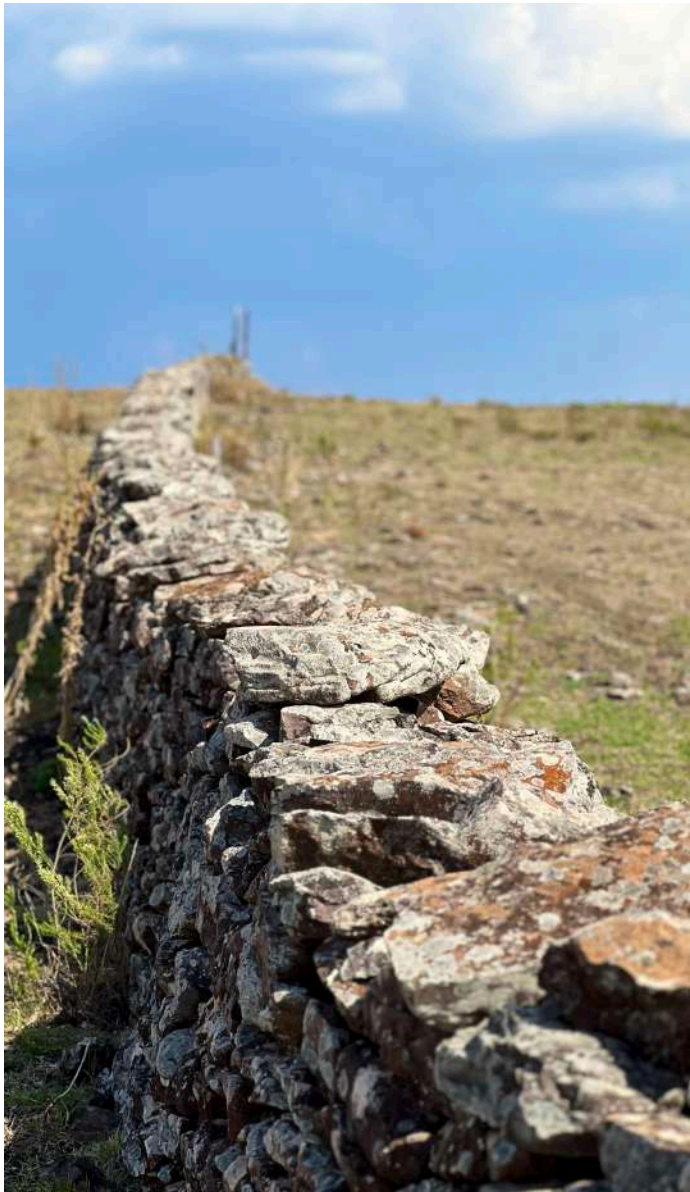


View towards the stone wall from a location at about 1/3 distance between one of the closest towers (T465) and the wall within Estancia Buen Retiro – tower location at the background not shown in the photo.

View of the one of the collapsed sections of the stone wall (documented collapse before the project ever started) at Estancia Buen Retiro. Note that the fence was installed over the stone wall foundation.





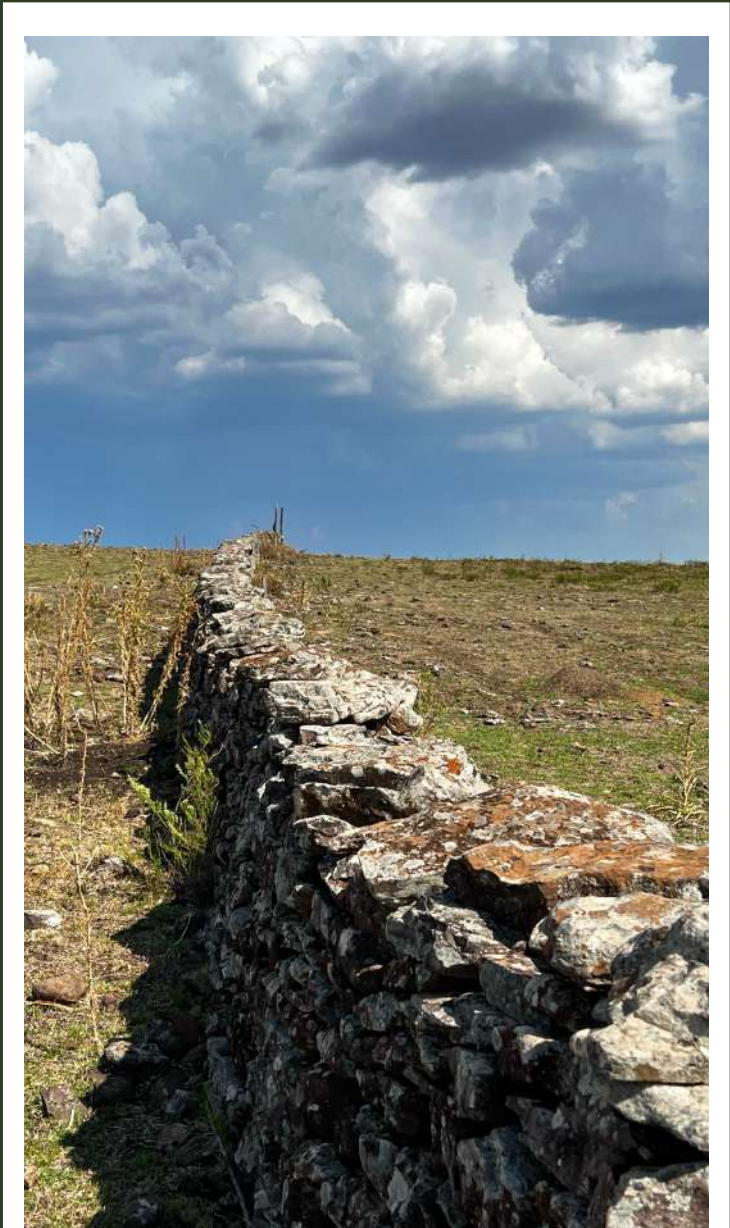


View of a section of the stone wall at Estancia Buen Retiro.

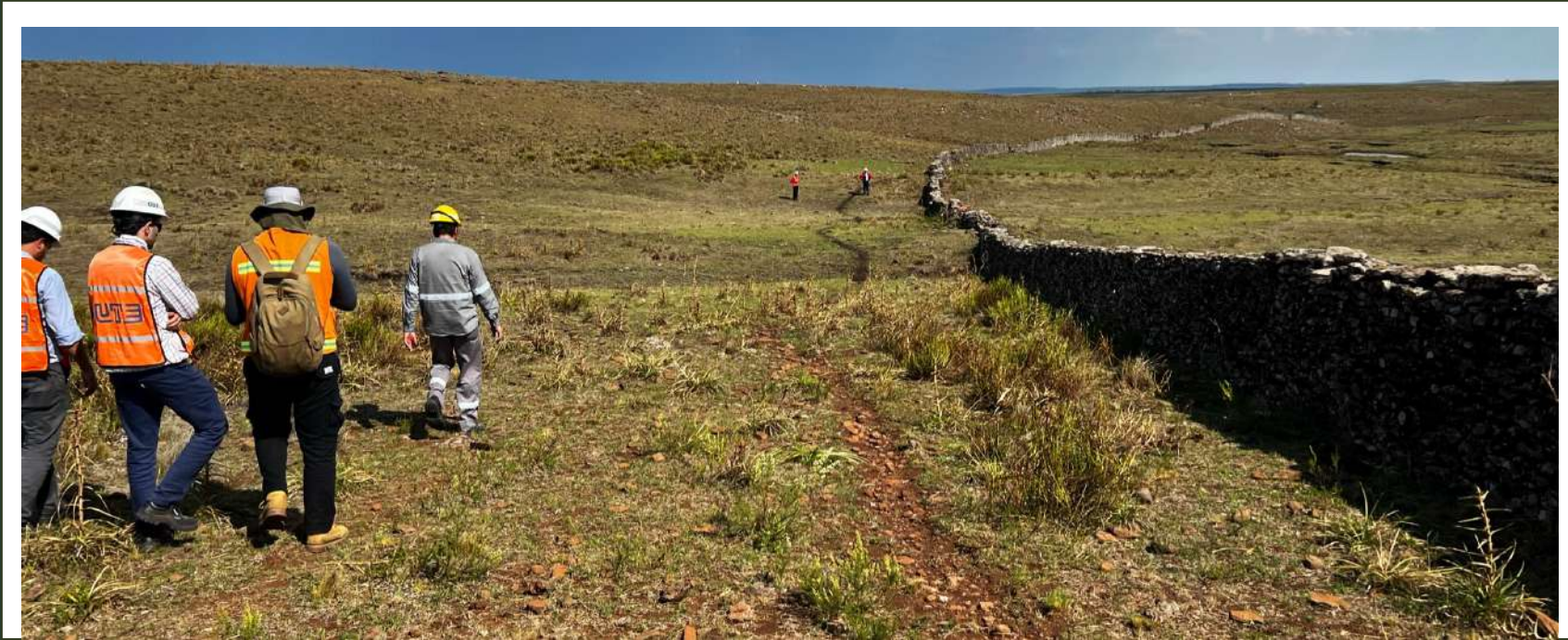


View of a section of the stone wall at Estancia Buen Retiro where the wall had previously been reconstructed by farm workers. Note the different color of the stones.





View of a section of the stone wall at Estancia Buen Retiro.



Mission members walking towards a low drainage point where the stone wall has partially collapsed - alleged affected by the project.



Mission member (João Paulo) near the stone wall at Estancia Buen Retiro.







View of stone wall at Estancia Buen Retiro with several collapsed sections (most of them documented prior to project) with a section that had been reconstructed by farm workers in the foreground.



View of stone wall at Estancia Buen Retiro and drainage channel leading into it.



View of stone wall at Estancia Buen Retiro with drainage structure partially blocked.





View of stone wall at Estancia Buen Retiro with collapsed sections. Note that the collapses occur with the same general section of the wall and that all of collapses point to one side opposite from the water drainage direction.

View of the stone wall at Estancia Buen Retiro where a collapse had happened. Note that the water drainage system is almost entirely blocked by vegetation and debris.







Mission member (Luiz Gabriel) near the stone wall at Estancia Buen Retiro.

View of obstructed drainage system at a collapsed section of stone wall at Estancia Buen Retiro. Note that the top part of this section was reconstructed by farm workers with different color stones.



Construction of the foundation for a tower.







Project archeologist and IDB Invest archeologist (consultant) inspecting the stone wall at Estancia Buen Retiro.



Construction of the foundation for a tower.



Soil formation with basalt rocks at the surface level that explains the widespread use of stone walls as fences around the region.





Sunset at Chamberlain electric sub-station.