

YIB'AN BID INVEST

BID Invest, a' ton swatx'il q'ab' juntzan mochan yatut mulnajil yet BID, a' ton jun k'ub'anb'a chi yaq' sch'ib'ub'al a' ton jun k'ub'anb'al tumin yet ch'ib'ub'al tol chi yaq' kolwal tumin b'ay juntzan yatutal mulnajilej tx'oqtx'oq yajawil k'al mimeq mulnajil yet ch'ib'ub'al yul América Latina k'al Caribe. Bid Invest chi ssay kawxeneqalil, chi kolwaj yetoq heb' yatutal mulnajil yet ch'ib'ub'al yaq'on ok yipal jun chi yiq energias limpias, chi yak'b'anej awb'en, chi yaq'ok yipal stxolil ch'en iqom anima kax chi uj scha'on heb' kolwal tumin.

- Komulnajil tol chi jaq'ok yipal ch'ib'ub'al tumin, yipal mulnajil anima, ch'ib'ub'al k'al mimeq ochwanilej yet yatutal komulnajil yul smochanil BID.

- Puch wal miman yelapnoq lus yet kax chi ch'ib' konoblaq yul América Latina k'al Caribe. Chi kosay ji'ontox jun chi yiq energía limpia yin mimantaqil. Ipan komulnaj yet ayman chi snub'ok sb'a combustibles fósiles yetoq ak' lus.

- BID Invest chi mulnaj ok yet chi smitx'ok b'ey heb' manjom b'eyb'alej yib'antox yib'an q'inal, yib'antox anima k'al yajawilal yet kax chi apni ok yetoq yipalil jun ch'ib'ulal b'ay mimeq mulnajil chi aq'lay tumin b'ay.

- Jun b'eyb'alej chi yiq Sostenibilidad Ambiental k'al Social yet BID chi sjunnanej sb'a yetoq ak' b'eyb'alej yet konob'laq kax chi yaq'on ok yipal ak' lajti'ejal chi mulnajnelayi, juntzan ayok yipal yin yokilal anima, owalil yib'antox k'exkixhtaquil ka'l heb' ix k'al winaq, axka k'apax smulnajil junjuntaq heb' ayok sxol.

GENERADORA YET SAN MATEO S.A (GSM) K'AL GENERADORA YET SAN ANDRÉS S.A (GSA) XEQ'A' GSM

GSM

- Aqb'il ok yin stelanil yet 25 sway septiembre yet 2013 yuj BID Invest
- Generadora yet San Mateo S.A. (GSM)
- Mulnajil hidroeléctrico yet a'ej 20 MW
- Hoq sq'an ya'ejal Q'eq miman a'ej k'al Pojom
- Chi yaq' yul ab'il 120.087 MWh GSA

GSA

- Aqb'il ok yin stelanil yet 25 sway septiembre yet 2013 yuj BID Invest
- Generadora yet San Mateo S.A.
- Mulnajil hidroeléctrico yet a'ej 10 MW
- Hoq sq'an ya'ejal a' miman a'ej yet Primavera, Varsovia k'al a' Arroyo
- Chi yaq' yul ab'il 44.300 MWh

i Tzet yetal jun hidroeléctrica yet a'ejal? Haq' k'lik kayti' yib'an jab'oqxa ab'ix

¿TZET YUJ BID INVEST MAX YAQ' STUMINAL JUN MIMEQ MULNAJIL TI'?

Tol max yochej max kolwaj ok yib'an swatx'ji ok yipalil k'ax sxe'alil stitok lus yul Xeq'a', kax k'amxa chi scha'k'al ok skolwal juntzan combustibles fósiles, yaq'on ok yipalil lus chi titok yuj mimeq mulnajil lus yin a'ej axka juntzanxa mulnajil yib'an sjatatneb'al na.



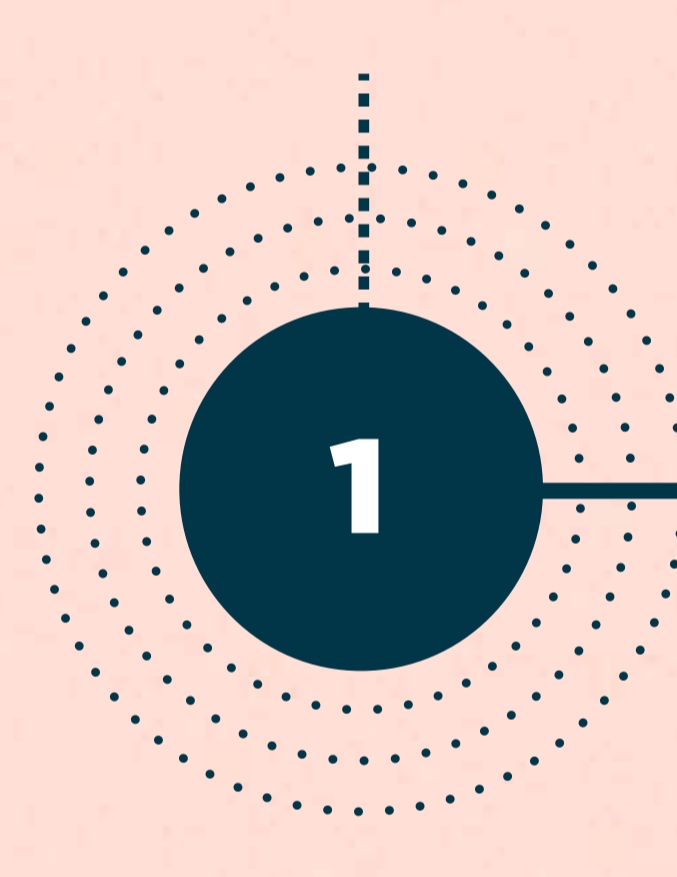
SYA'TAQIL NANI'

- Juntzan sya'taqil ay smay chi ek'i:
- Owal, jab'ab'ilal k'al owal ayxa ek'oq
 - Tzet ab'ixalej ayxa ek'oq axka k'apax sya'taqil aykanoq
 - Chi uj stitok sya'taqil k'al ya'ilal yib'an
 - B'aytal ay owal
 - K'unaltaqil k'al mochanil aq'om kam anima.



ILWAL YET TX'OQLIL MULNAJIL YIB'ANTOX Q'ANLEWAL K'AL ILWAL (MICI)

- 2018:** max cha'lay q'anwal yib'antox mulnajil GSA k'al GSM yuj heb' yajawil konob' k'al anima ma aj konob' yet Yixhk'isis b'ay MICI.
- Alwal yib'antox: yek'b'anil yul yib'an q'inal, yul konob', taynewal k'al yib'an heb' ix ix chi yil sya'ilal b'ay ayek' mulnajil, axka wal heb' jet konob'al.
 - Tx'an yunal yab'ixal mulnajil yib'antox skawxenelay ilwal yet MICI max ilchaj elteq tol ay juntan sya'taqil maj jatax yib'antox stxolil mulnajil yet staynewal konob' k'al yul yib'an q'inal yuj BID Invest.



AWATX'IL MIMEQ MULNAJILEJ YET BID INVEST

- BIF Invest max yaq'ok stelanil k'al swatx'ilal
- Max mulnaj ok yin stelanil skolwaj b'ay anima k'al b'ay konob' yet chi apni ok heb' yin junoq lajti'ejal smulnaj skolon ok heb' sb'a.
 - Max apni ok heb' yilon mulnajil yetoq juntzan anima chi mulnaj ok yib'antox yib'an q'inal k'al heb' chi yiq consultores sociales independientes.
 - Yelb'anil smitx'q'ab'il kolwal kuyoq chi yaq'ok yipal mulnajil yib'antox sa'b'ejal yichb'anil taynewal, yokilal anima k'al staynewal yul yib'an q'inal.
 - Max ok yin stxolil heb' mulnajwom yib'antox kokonob' anima.
 - Max kolwaj ok yetoq tumin yet ay numk'ulal axka jun chi yil yin Mesa de Diálogo max aq'lay ok stxolil b'ay yajawil Xeq'a' kax chi ok yipalil konob'.
 - Max tojlanelay juntzan consultores/ONG ay sjelanil yib'antox yok watx' lajti'ejal owal.
 - Max aj yipalil kuyoq kolwal yet max illaytoq mulnajil b'ay stx'otx'al tu' k'al yul awteb'al.



SB'EY MIMEQ MULNAJIL

Max scha'ok sjataxil mulnajil: **2013**

Yet 2014, 2015, 2016 k'al 2017:
max ok wahan mulnajil yin k'exk'ixhtaquil b'eqanil yuj mimeq owal k'al elq'anil max ok yib'antox te' yatutal k'ax mitx'b'alq'ab' mulnajil.

Max ok wahan **jun 81%** sb'eqanil yet max b'ey juntzan mulnajil ti'

Nani' juntzan mulnajil GSM k'al GSA toxa chi lajwi okoq.



YICHB'EJAL YET STXOLIL SMULNAJIL BID INVEST

- 2021:** Mulnajilej yib'antox tzetzaq yaloni k'al i'lay el:
- Mulnajil asan yul BID Invest tol chi yaq'ok yipal smulnajnelay proyectos axka k'apax say'ilwal.
 - Mulnajilej b'ay heb' k'ultaq max yil sya'ilal axka k'apax heb' q'anilwom.
 - Watx' mulnajilej chi kolwaj yaq'on ok yipal taynewal k'al smulnajnelay yokilal anima kax ayok yipalil yin mochanil anima chi yil say'ilal k'al ix.



JICHB'ANILEJ YET ELWAL

- Yet max illay tol chi k'ak'on sna'b'al heb' majanwom slajon mulnajil, yet 2021, BID Invest max sb'eqkan ok wahan proyectos, yujtol max k'expoj stxolil alb'ilkan yet max scha'okoq.
- BID Invest k'al heb' majanwom yet proyectos max yaq' heb' stojtz'ib' yib'an slajti'al slajwi mulnajil yet 12 sway octubre yet 2021.
- BID Invest k'amxa chi kolwaj yetoq tumin b'ay smulnajil Generadora yet Mateo k'al Generadora yet San Andrés S.A.



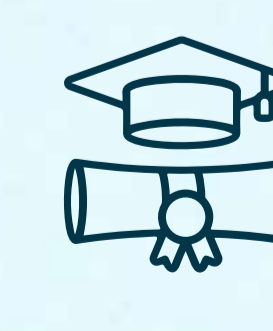
MULNAJIL YET STXOLIL SMULNAJ BID INVEST



Say'ilwalil yet sya'taqil yet ix k'al winaq axka sjatax junoq mapeo yet kolwal mulnajil b'ay heb' ix max yil sya'ilal owal.



Kolwal b'ay juntzanoq mulnajil chi yaq'ok yipal tumin, techejb'ahil k'al swatx'k'ulal heb' ix ix ayek' b'aytal chi ok mulnajil.



Kuywal b'ay heb' mulnajwom yet yajawil k'al heb' tx'oqtx'oq mulnajwom ayok yul proyecto yet infraestructura yib'antox skuyb'anil yokilal anima axka yillay ay tx'emwal yet ka chi uj yok yipal sb'ey juntzan proyectos ti'.



Sjatneb'al kolwal kuyoq yib'antox watx'il b'eyb'alej yet ka chi jataxi kax chi illaytoq stxolil alb'alil.