

Client Impact **DEB**rief

ATLAS RENEWABLE ENERGY

July 2026



About Atlas Renewable Energy

Established in 2017, Atlas Renewable Energy (Atlas) develops, constructs, and operates renewable energy solutions that meet the needs of companies across Latin America. As the largest privately owned renewable energy producer in the region, and one of the world's fastest-growing renewable energy companies, Atlas offers a large portfolio that includes solar and wind energy, and large-scale battery energy storage systems.

Atlas works across the full lifecycle of renewable energy development, from project conceptualization and financing to construction and long-term operation. By integrating diverse clean energy sources, the company provides supply under long-term contracts, supporting corporations in their transition to 100% clean energy with both flexibility and scalability.



US\$41.9M

in renewable energy
investments

4.7 GW

generation of installed
capacity for solar
and BESS* projects

1.4M

homes powered across
Latin America

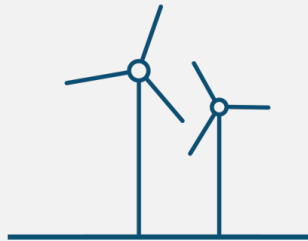
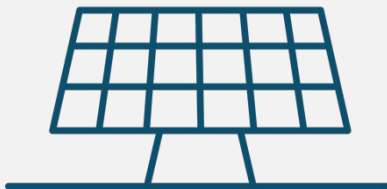
985 ha

of land reforested

Geographic Focus



Sectors



Vision



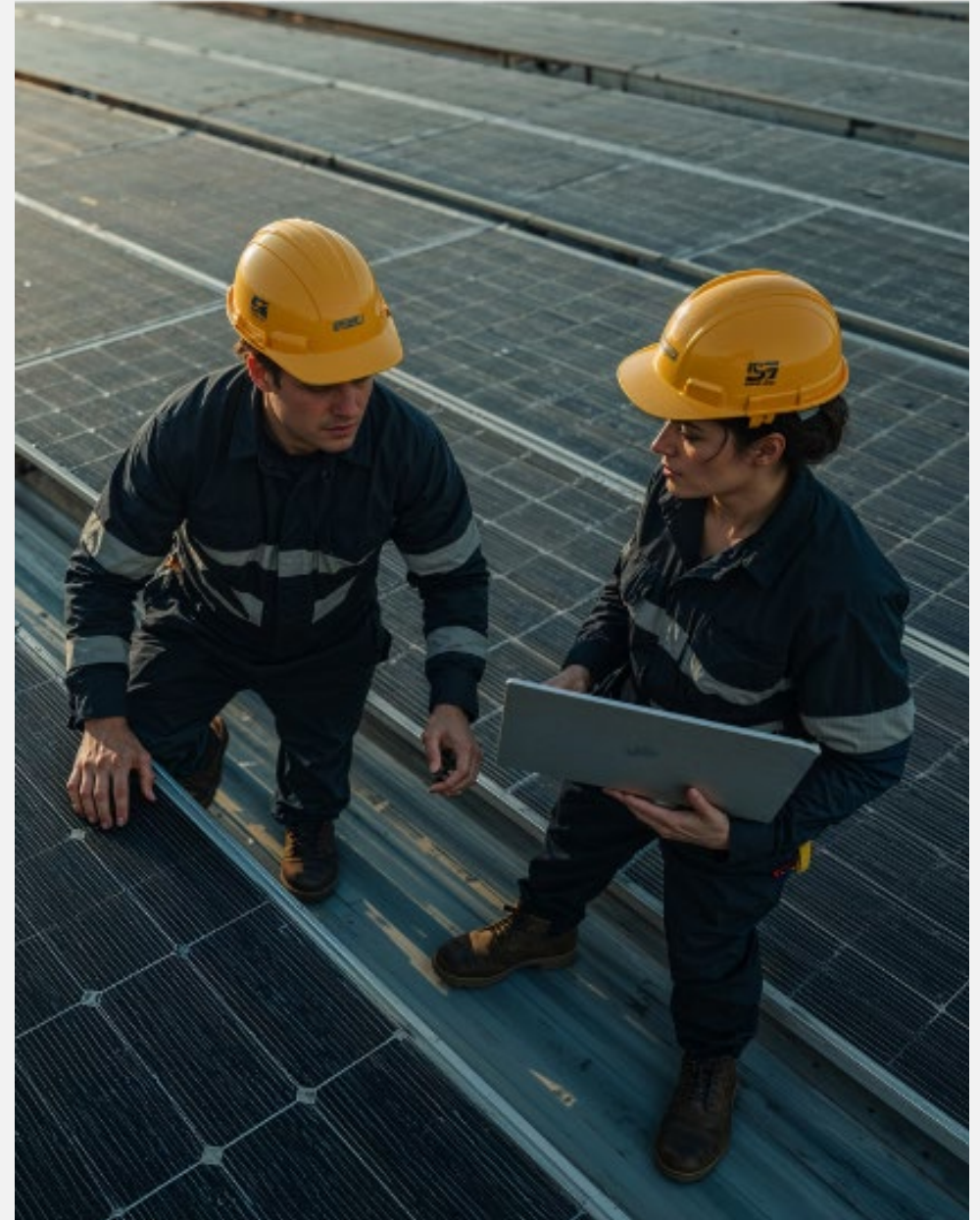
Partnering with Atlas Renewable Energy

With the New Juazeiro Bifacial Solar Power Project, IDB Invest has provided US\$68.7 million in financing to Atlas Renewable Energy for the design, construction, commissioning, and operation of four photovoltaic plants with a combined capacity of 187 MWp, and related interconnection facilities in the city of Juazeiro, Bahia State, Brazil. In addition, IDB Invest is delivering advisory services to support workforce and talent management initiatives at the corporate level.

By partnering with Atlas Renewable Energy, IDB Invest is supporting Brazil's efforts to expand non-conventional renewable energy, diversify its energy matrix, and lower the carbon intensity of electricity generation, helping to reduce the impact of droughts on a system still heavily reliant on hydropower.

The investment enables Atlas Renewable Energy to supply clean electricity to major industrial clients through long-term commercial agreements, while also selling energy into the broader market, helping the company strengthen and expand its clean energy portfolio.

The New Juazeiro Bifacial Solar Power Project is one of the first large-scale solar initiatives in Brazil to adopt such long-term commercial arrangements. It also introduces advanced bifacial solar technology, using panels designed to capture sunlight on both sides, which helps boost energy production and lower overall costs.



Investment Snapshot

Sector	Region	Total Project Investment	Approval Date
Energy	Brazil	US\$61M	2020

TARGETS (2025)

INSTALLED POWER CAPACITY	ENERGY GENERATED FROM RENEWABLE RESOURCES ¹
157MW	381,000MWh
GREENHOUSE GAS EMISSIONS REDUCTION	
113,000 tons of CO2 per year	

1. The source of renewable energy generated, including waste, hydropower, wind, solar, geothermal, biomass, and other sources.

Measuring Development Impact

IDB Invest's Impact Management Framework is an end-to-end series of tools and practices covering the complete investment lifecycle. It allows us to build, measure, and manage a portfolio of financially sustainable investments that maximize development impact and contribute to reaching the Sustainable Development Goals (SDGs).

The SDGs are at the core of our approach. IDB Invest identifies the expected contributions of each investment to specific SDG targets upfront, and measures actual progress achieved over time.



New Juazeiro Bifacial Solar Power Project: Development Impact Results

5 GENDER EQUALITY



New Juazeiro promotes women's participation and equal opportunities in employment and leadership by creating local job opportunities in a vulnerable region.

YES

SUCCESSFUL IMPLEMENTATION OF THE
WOMEN'S ECONOMIC OPPORTUNITY
ACTION PLAN

7 AFFORDABLE AND CLEAN ENERGY



By adding large-scale solar generation and related transmission infrastructure, the project increases the share of renewable energy in Brazil's energy matrix and supports access to sustainable electricity services.

187MW

INSTALLED POWER CAPACITY
(2024)

351,830MWh

RENEWABLE ENERGY GENERATED
(2024)

9 INDUSTRY, INNOVATION AND INFRASTRUCTURE



By developing sustainable and resilient energy infrastructure, New Juazeiro supports economic development and human well-being while improving the reliability and efficiency of the electricity system.

187MW

INSTALLED POWER CAPACITY
(2024)

New Juazeiro Bifacial Solar Power Project: Development Impact Results

13 CLIMATE
ACTION



By expanding renewable energy generation, the project contributes to climate action by reducing greenhouse gas emissions and supporting mitigation efforts,

**15.599 tons of
CO2**

GREENHOUSE GAS EMISSIONS
REDUCTION (2024)

17 PARTNERSHIPS
FOR THE GOALS



New Juazeiro mobilizes financial resources to support sustainable initiatives in developing countries.

US\$24.4M

RESOURCE MOBILIZATION
AMOUNT (2024)

Measuring & Managing Impact: New Juazeiro Bifacial Solar Power Project's DELTA Impact Score

The New Juazeiro Bifacial Solar Power Project's DELTA Impact Score reflects its potential to advance sustainable development by expanding Brazil's renewable energy capacity and helping reduce the carbon footprint of industrial production. By financing bifacial solar panels with higher energy productivity, the project supports the displacement of greenhouse gas emissions and strengthens Brazil's clean energy transition under competitive market conditions.

The score also captures innovation through the deployment of advanced bifacial technology, which enhances generation efficiency and offers opportunities for knowledge transfer and future replication. In addition, it reflects the project's contribution to workforce development through actions such as STEM outreach for young women, support for women's economic opportunities in local communities, and measures to promote women's participation during construction.



DELTA Impact Score

The DELTA is IDB Invest's rating system for assessing the expected economic, social, and environmental impact of each investment. The DELTA Impact Score* is tracked and updated annually to monitor and benchmark investment performance.

*To complement the DELTA Impact Score, IDB Invest calculates an Additionality Score to ensure that it provides financing beyond what is available in the market and that it contributes to better investment outcomes. The "DELTA Project Score" is the overall rating assigned to each project that encompasses both the DELTA Impact Score and the DELTA Additionality Score.

Benchmarking New Juazeiro Bifacial Solar Power Project's DELTA Impact Score

DELTA IMPACT SCORE



How does the New Juazeiro Bifacial Solar Power Project's score compare to other IDB Invest investments in the energy sector?*



BUILDING BLOCKS OF THE DELTA IMPACT SCORE**



Economic Analysis

Estimates the net benefits of the investment to the economy and society (Economic & Social Rate of Return).



Stakeholder Analysis

Complements the Economic Analysis by assessing the types of beneficiaries reached and the type of benefits generated.



Sustainability

Ensures that the project is financially sustainable and meets IDB Invest's ESG requirements.

* In comparison with the last DELTA impact score of peers in BID Invest's portfolio based on their latest supervision date.

** To complement the DELTA Impact Score, IDB Invest computes an Additionality Score to ensure that it provides financing beyond what is available in the market and that it contributes to better investment outcomes. The DELTA Project Score is the overall score that encompasses both the DELTA Impact Score and the DELTA Additionality Score.



Let's continue the conversation.

-  [idbinvest.org/blog](mailto:info@idbinvest.org)
-  [idbinvest.org/linkedin](https://www.linkedin.com/company/idbinvest)
-  [idbinvest.org/x](https://twitter.com/idbinvest)
-  [idbinvest.org/facebook](https://www.facebook.com/idbinvest)